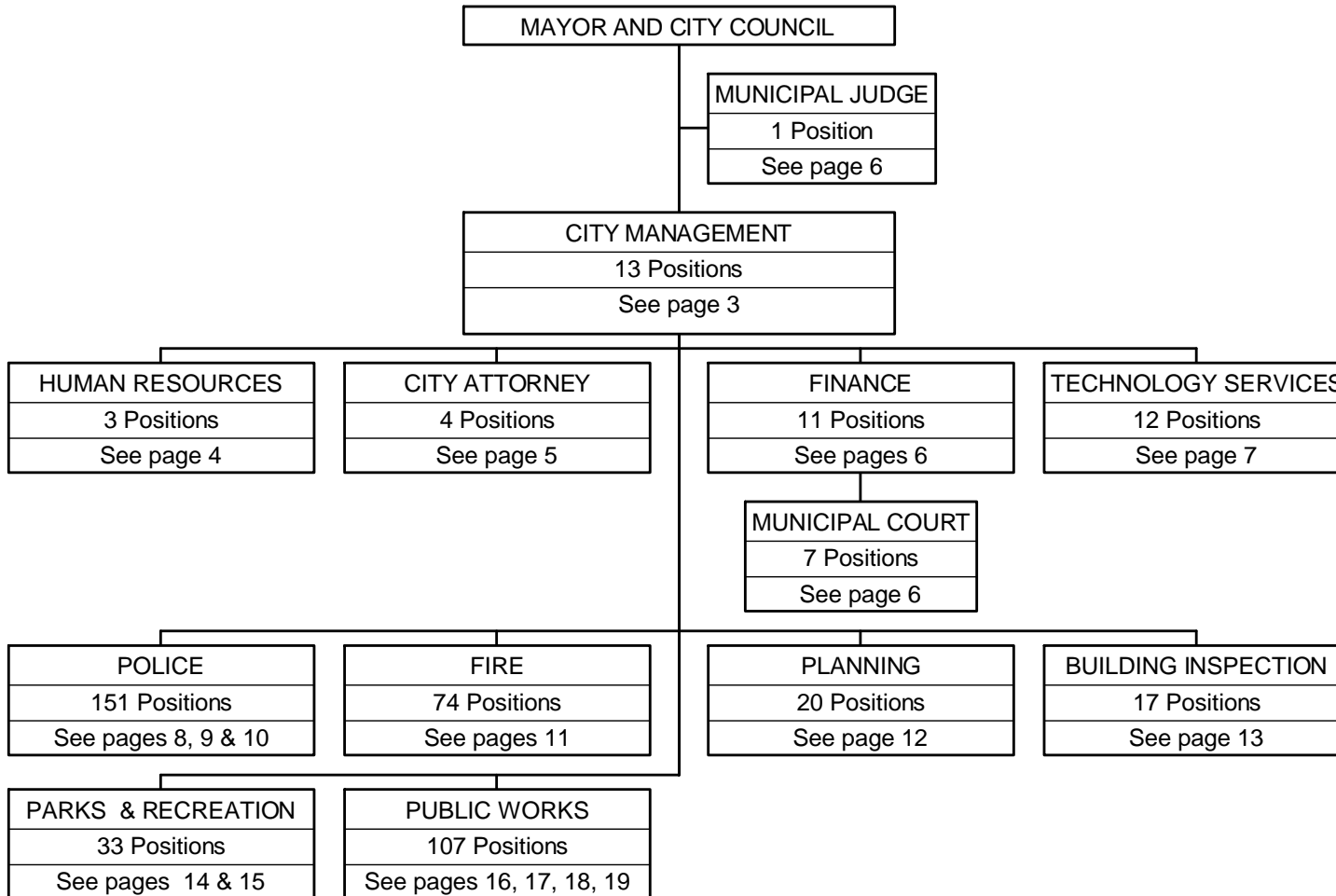


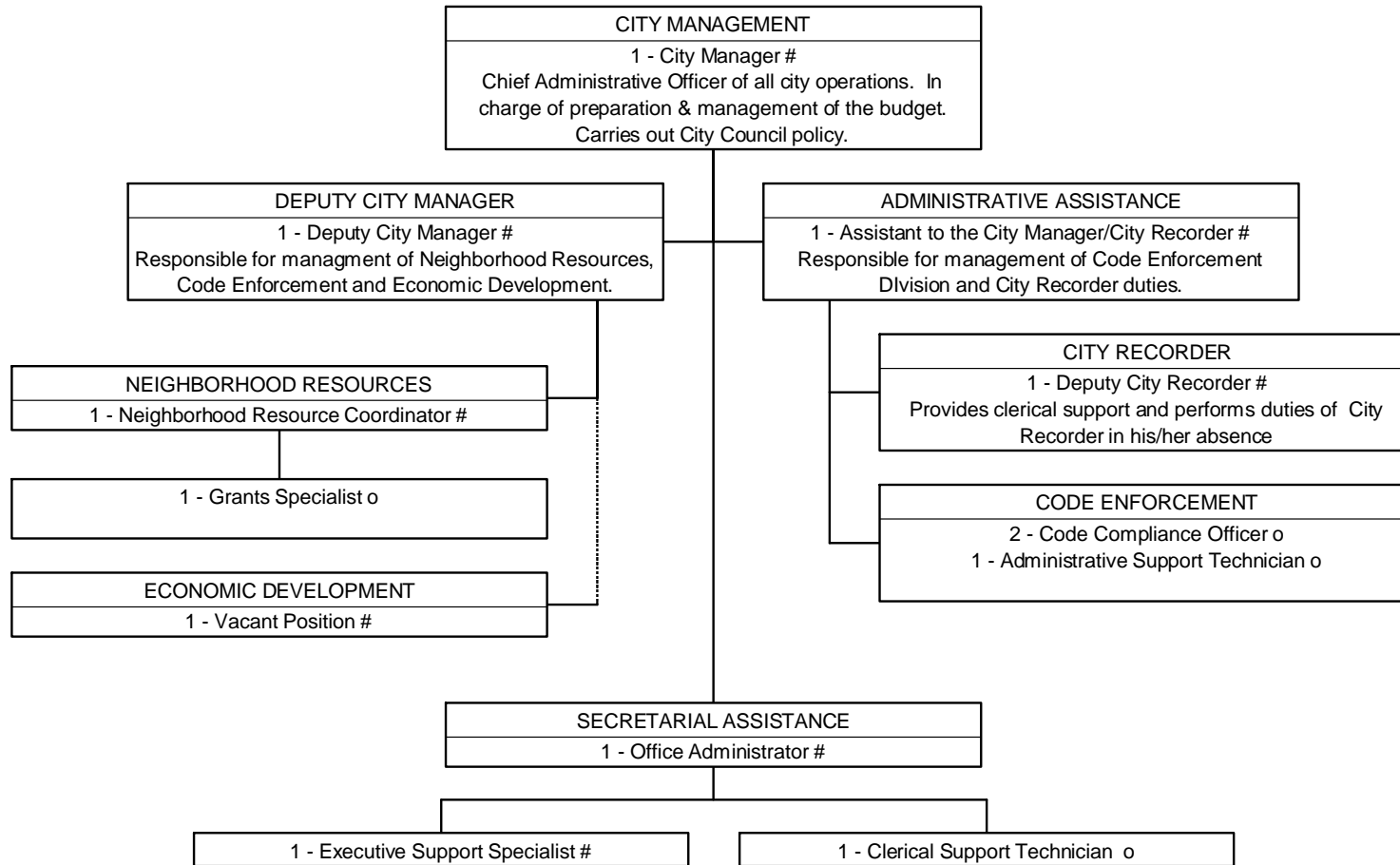


2006-2007 Organization Chart

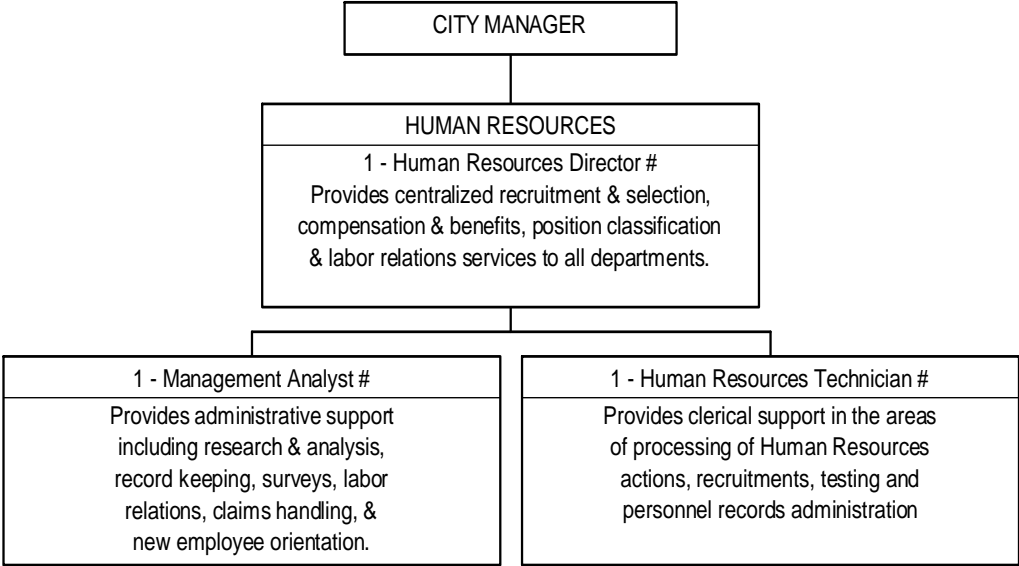
CITY OPERATIONS SUMMARY



CITY MANAGEMENT

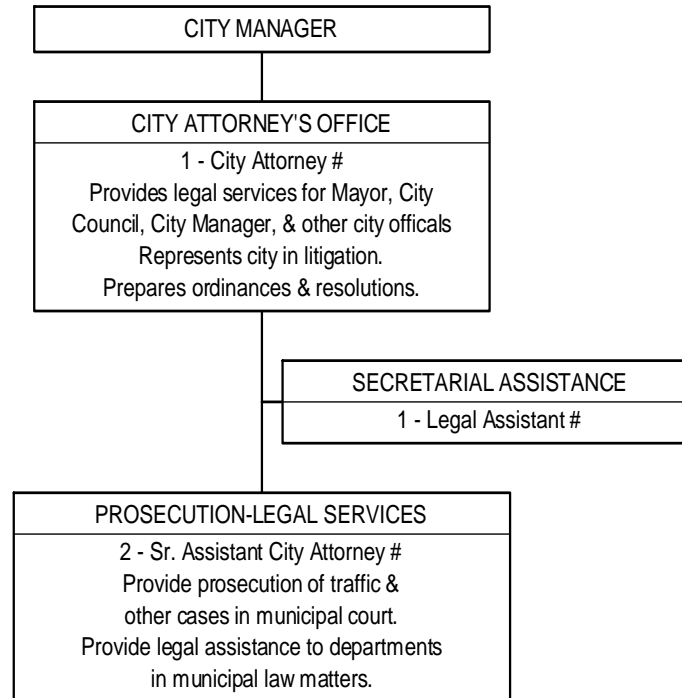


HUMAN RESOURCES



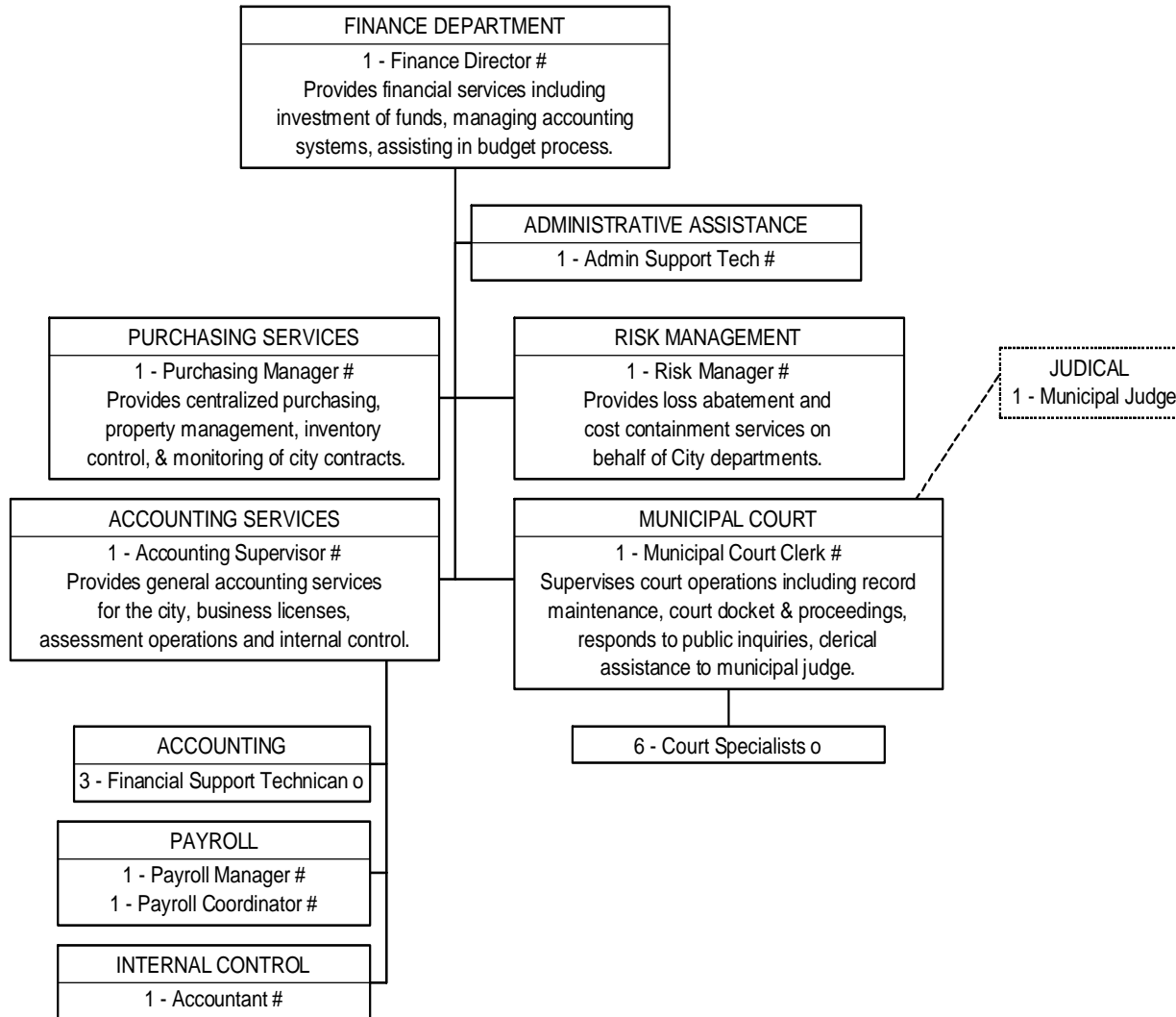
ADMINISTRATIVE SUPPORT SERVICES

City Attorney

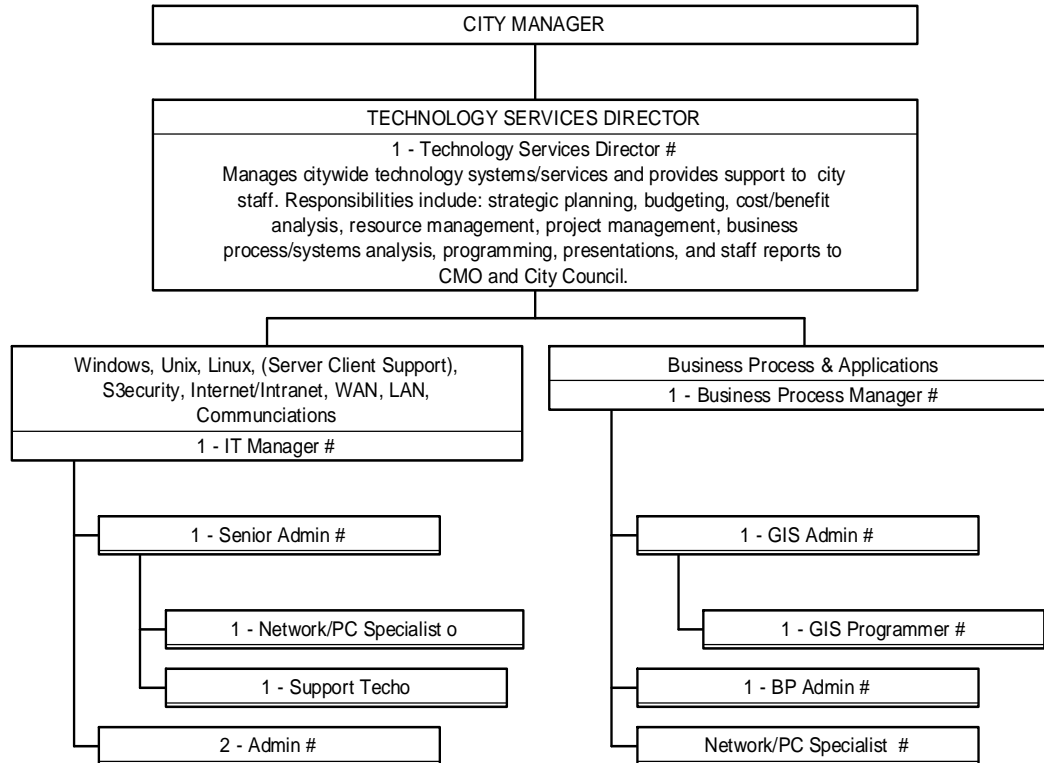


FINANCE DEPARTMENT

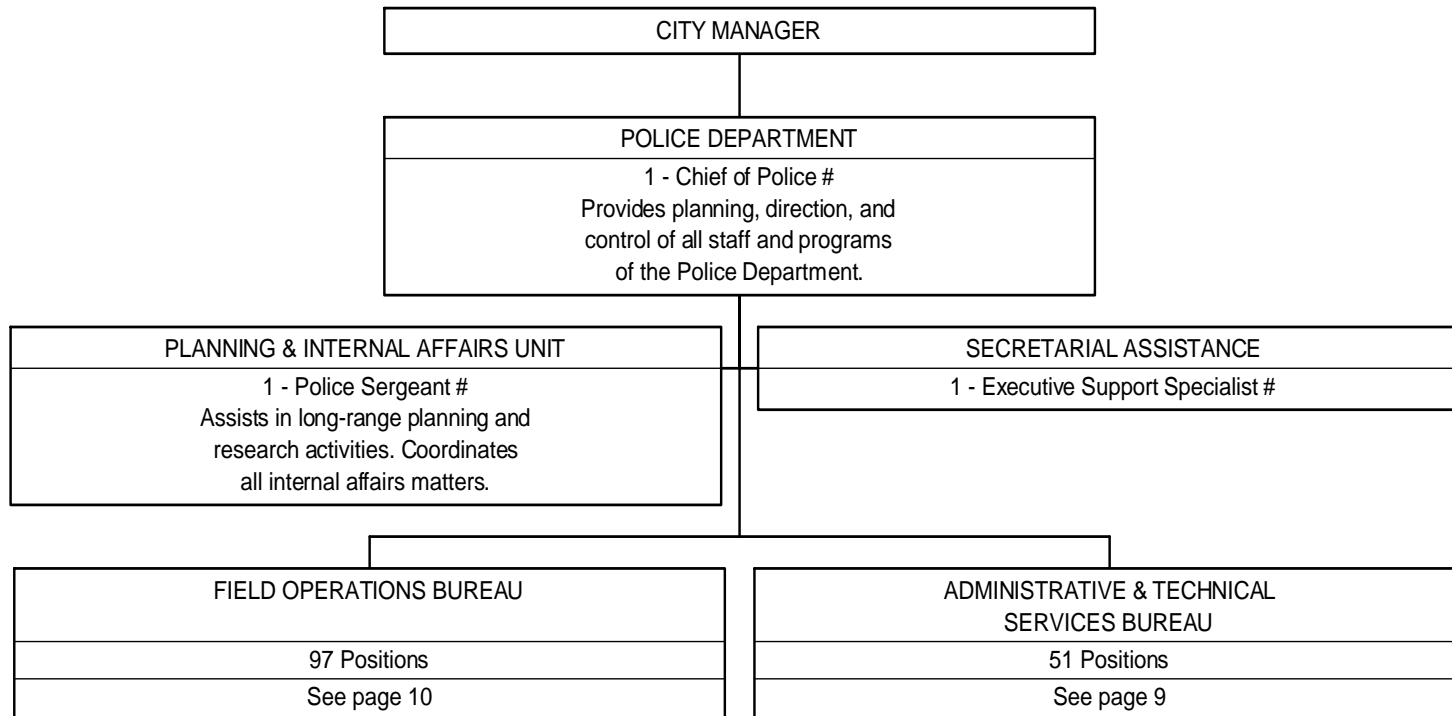
Financial Operations, Budgeting, Municipal Court, Purchasing and Risk Management



TECHNOLOGY SERVICES DEPARTMENT

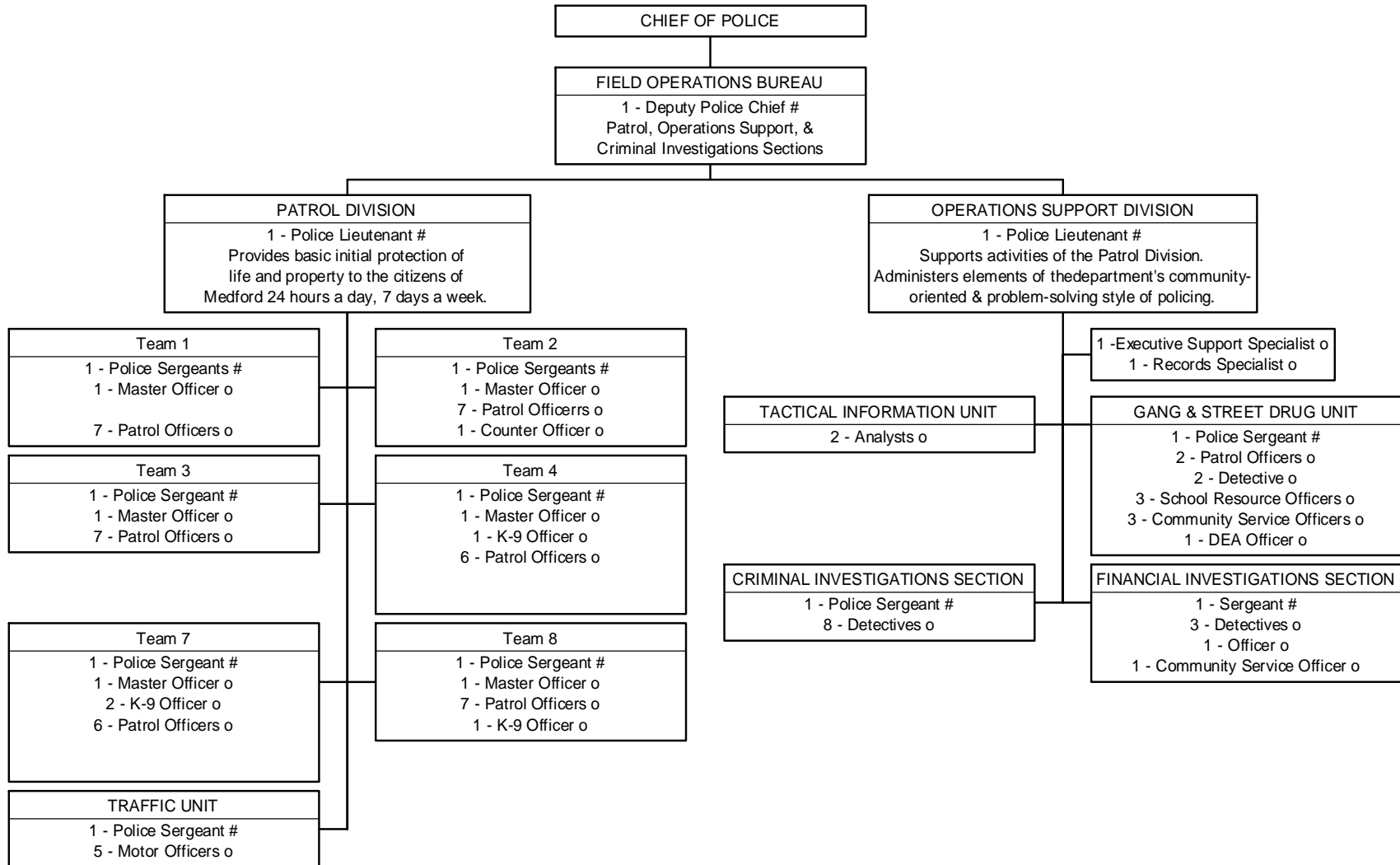


POLICE DEPARTMENT



POLICE DEPARTMENT

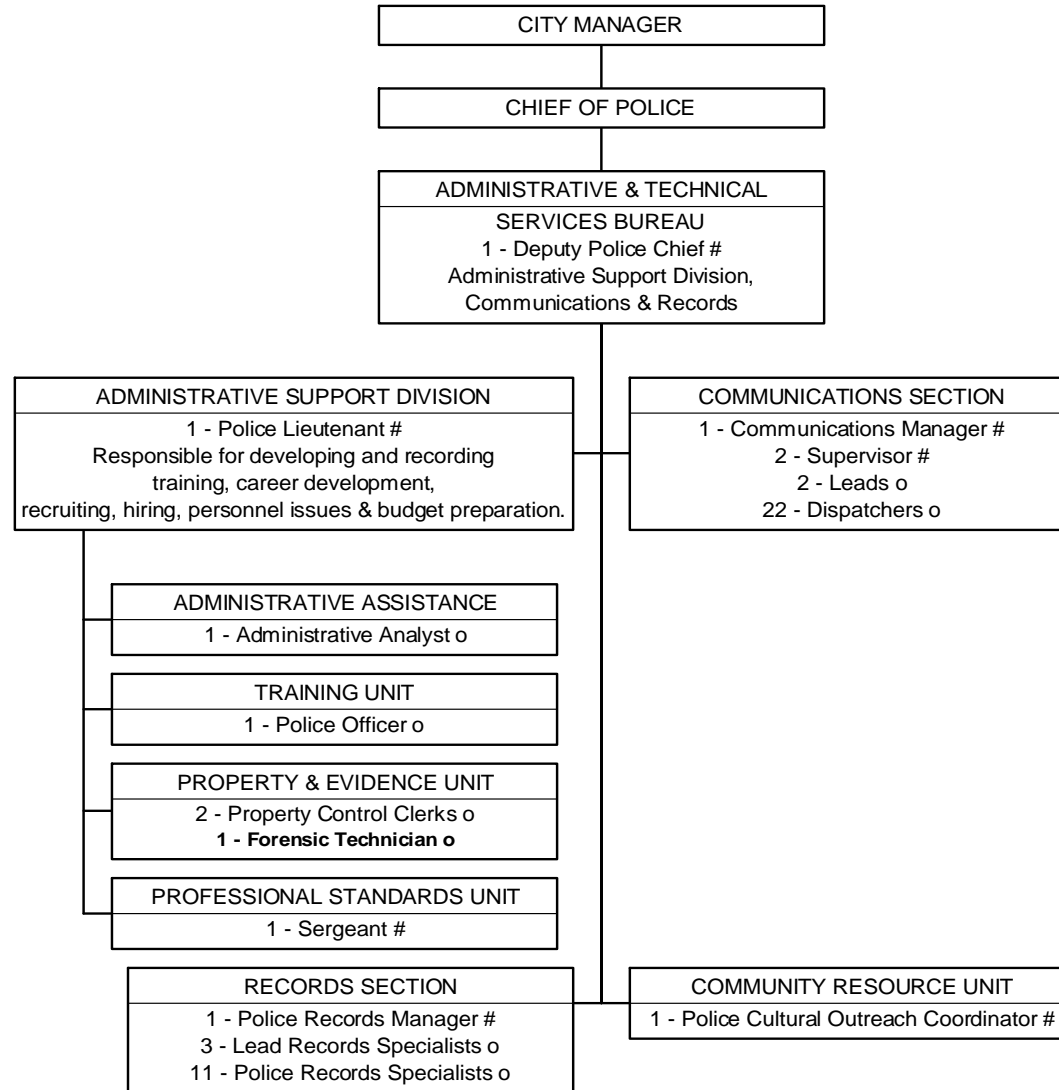
Field Operations Bureau



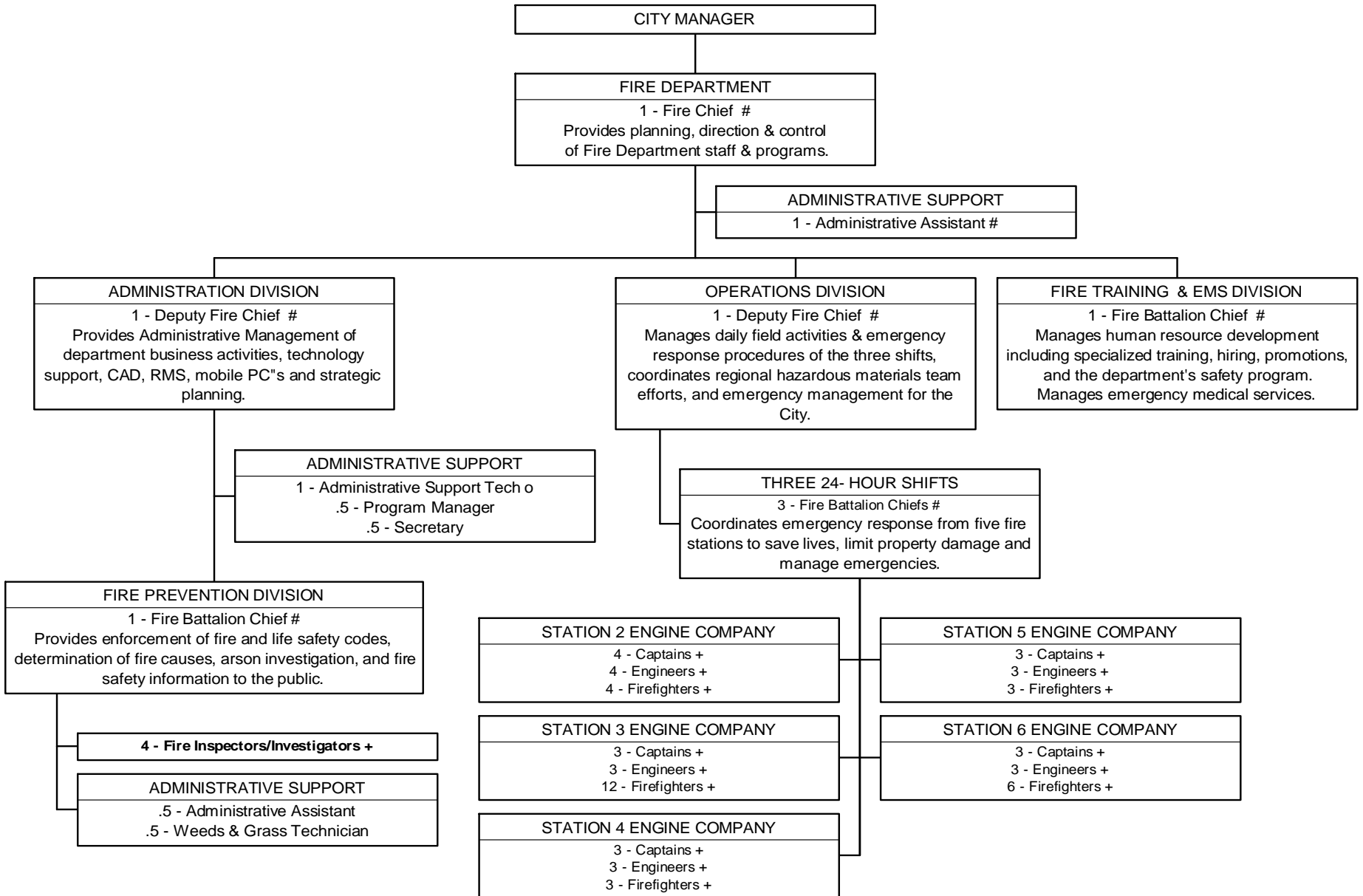
Executive, Supervisory, Confidential/Professional
o Teamsters - Police

POLICE DEPARTMENT

Administrative & Technical Services Bureau

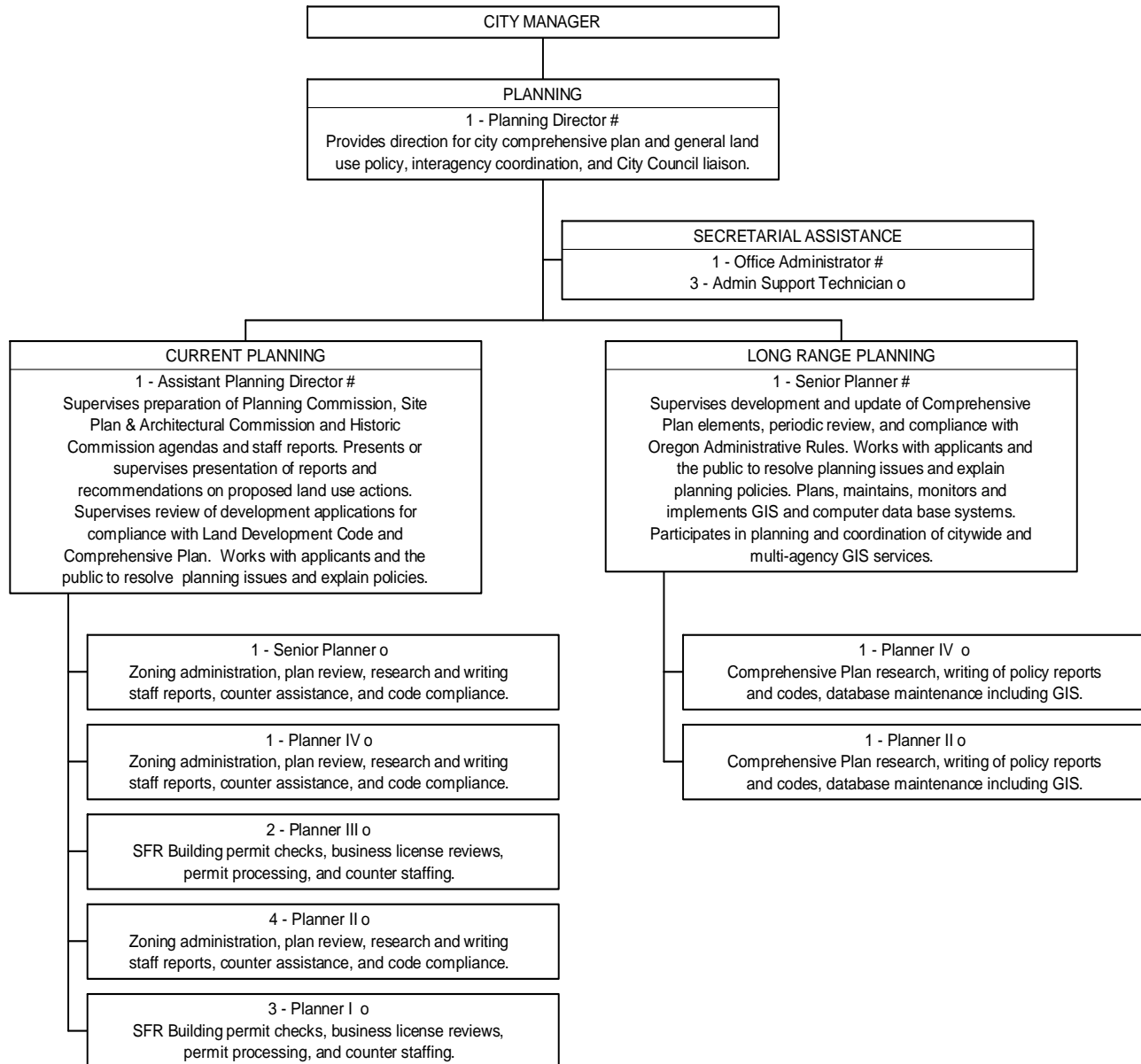


FIRE DEPARTMENT

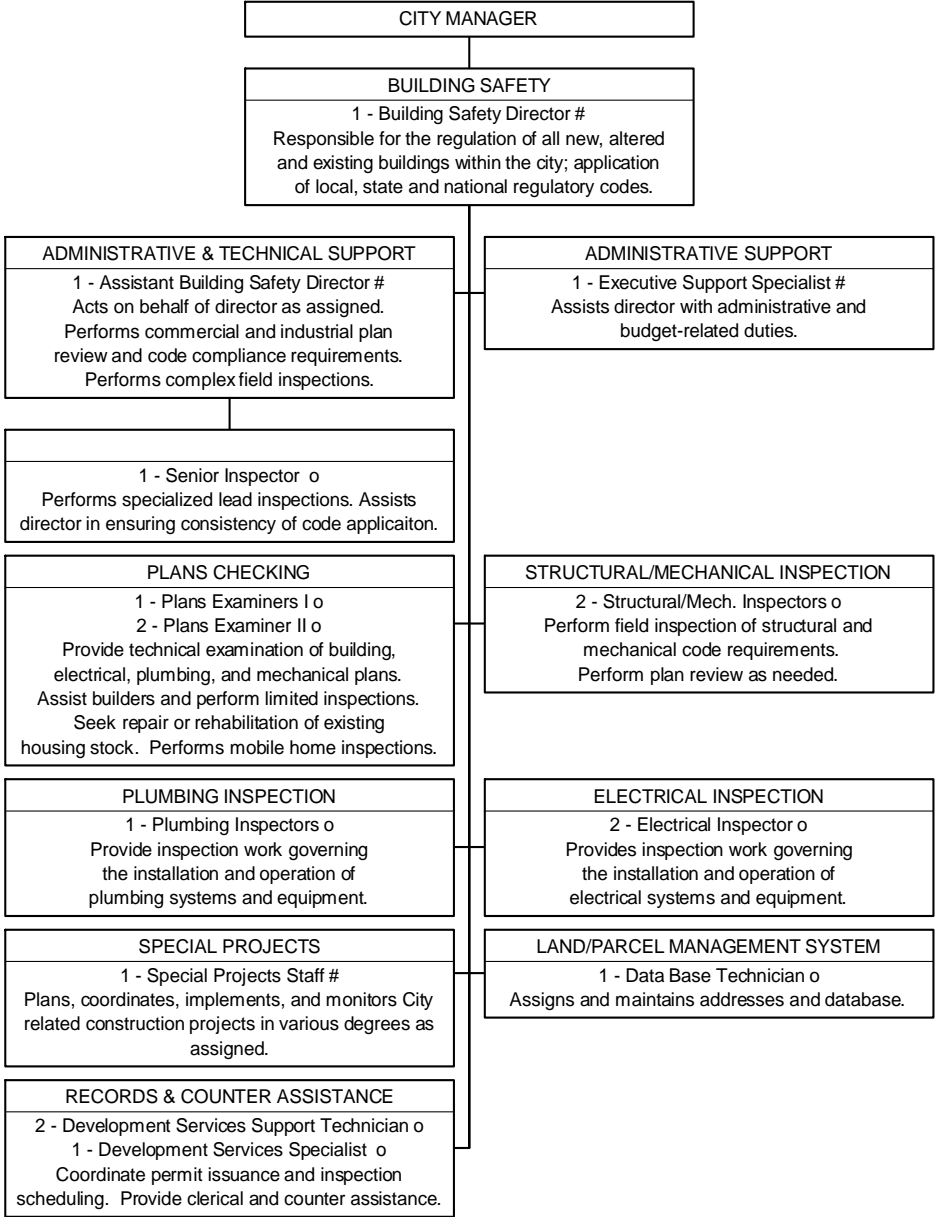


Executive, Supervisory, Confidential/Professional
 o Medford Municipal Employees Association/AFSCME
 + International Association of Fire Fighters

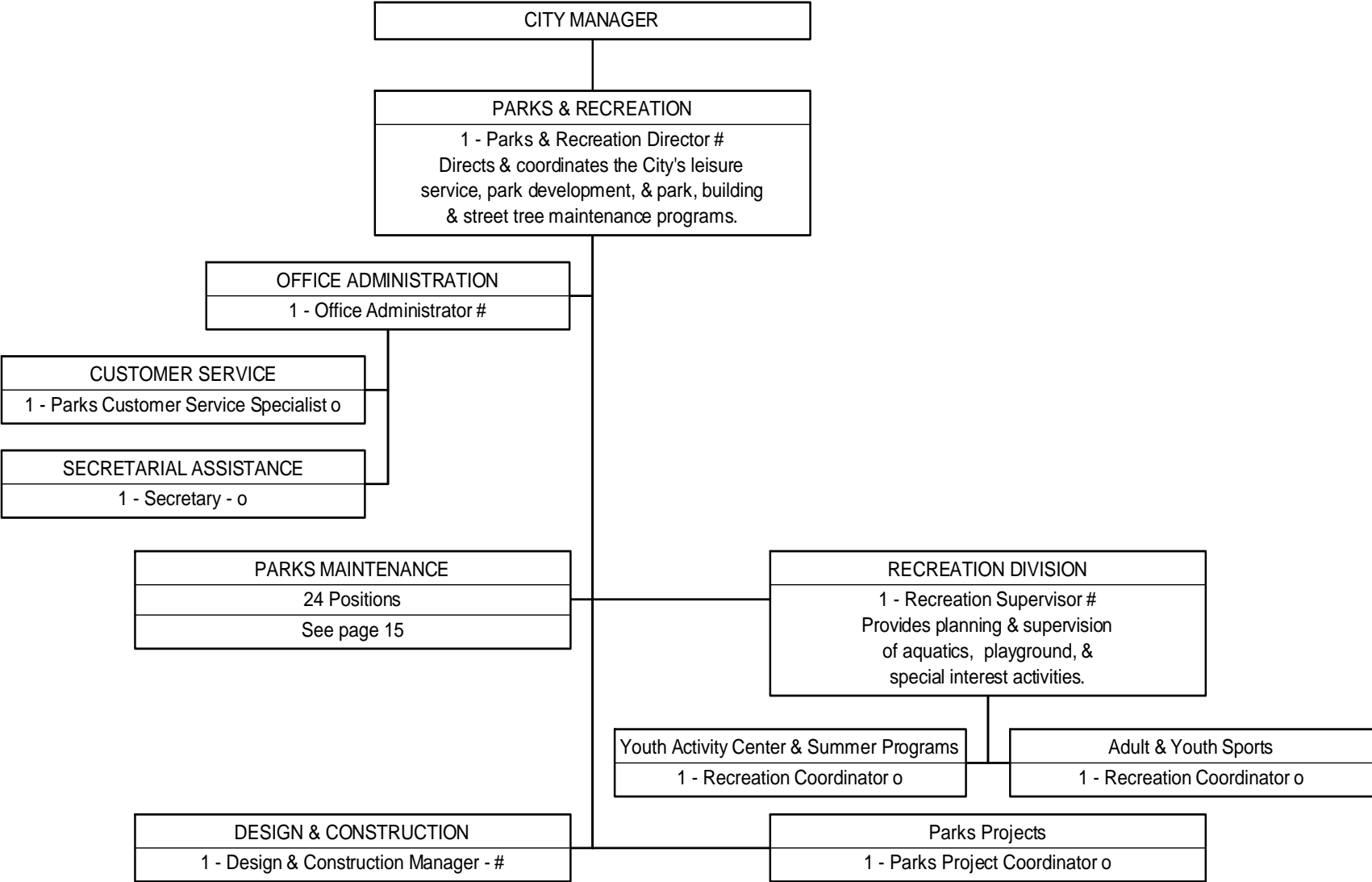
PLANNING DEPARTMENT



BUILDING SAFETY DEPARTMENT



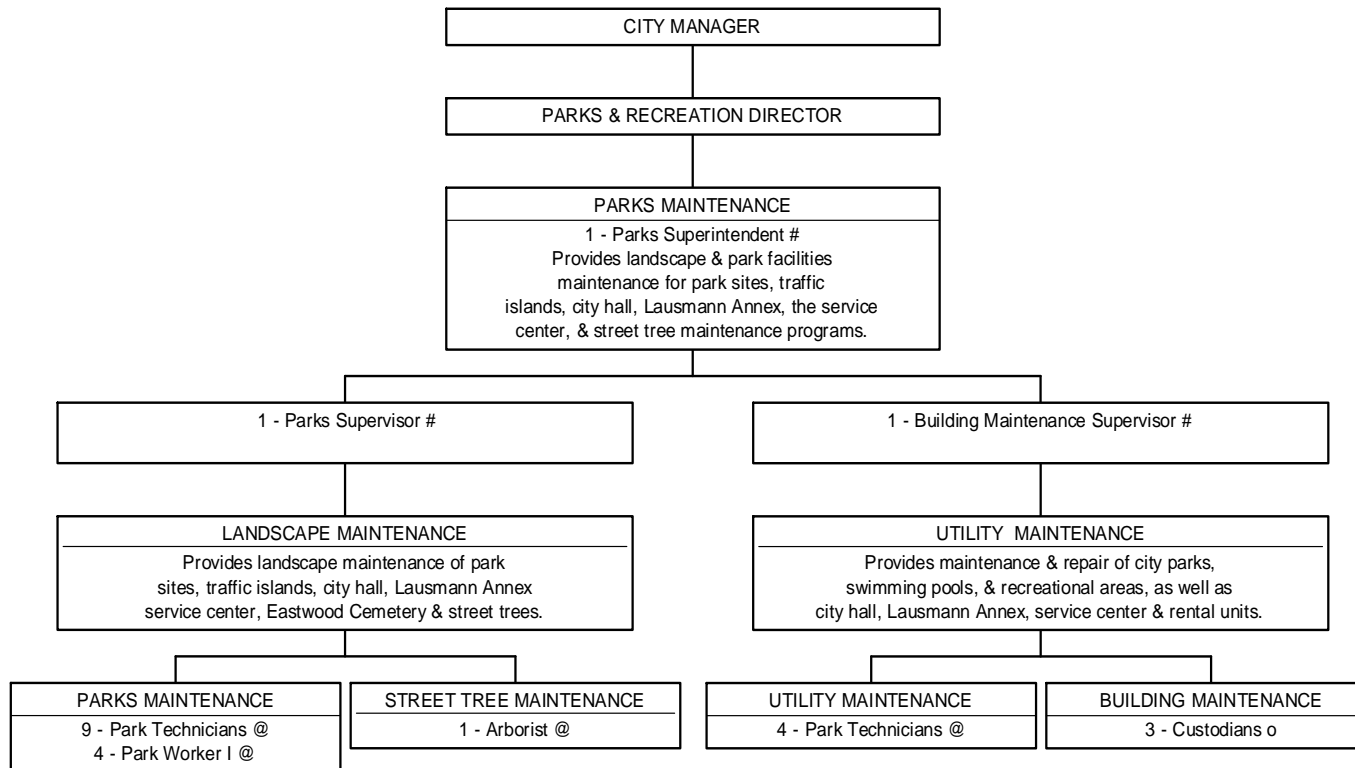
PARKS & RECREATION DEPARTMENT



Executive, Supervisory, Confidential/Professional
o Medford Municipal Employees Association/AFSCME

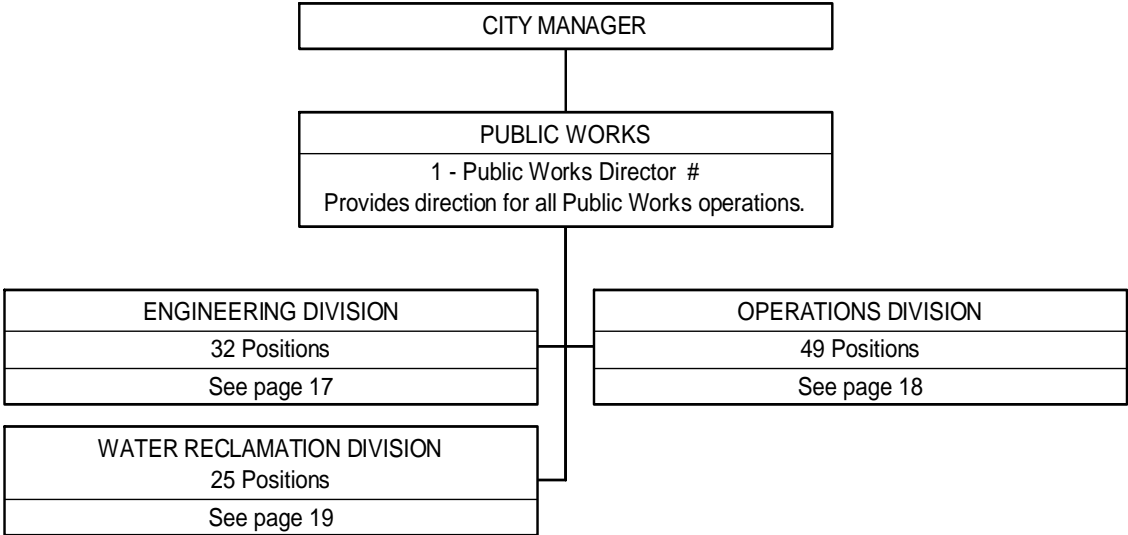
PARKS & RECREATION DEPARTMENT

Parks Maintenance



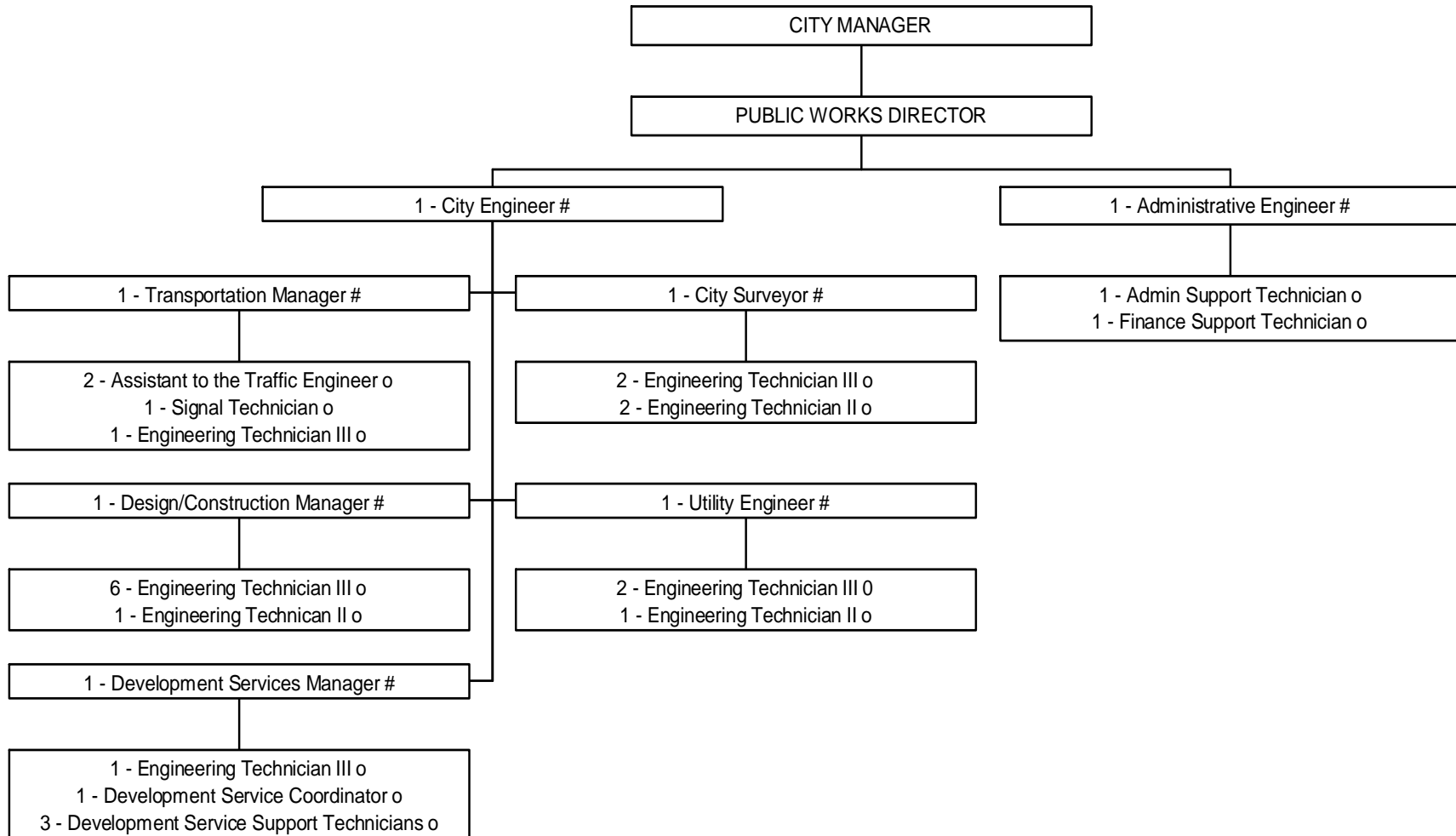
Executive, Supervisory, Confidential/Professional
 o Medford Municipal Employees Association/AFSCME
 @ Medford Park Employees Association

PUBLIC WORKS DEPARTMENT



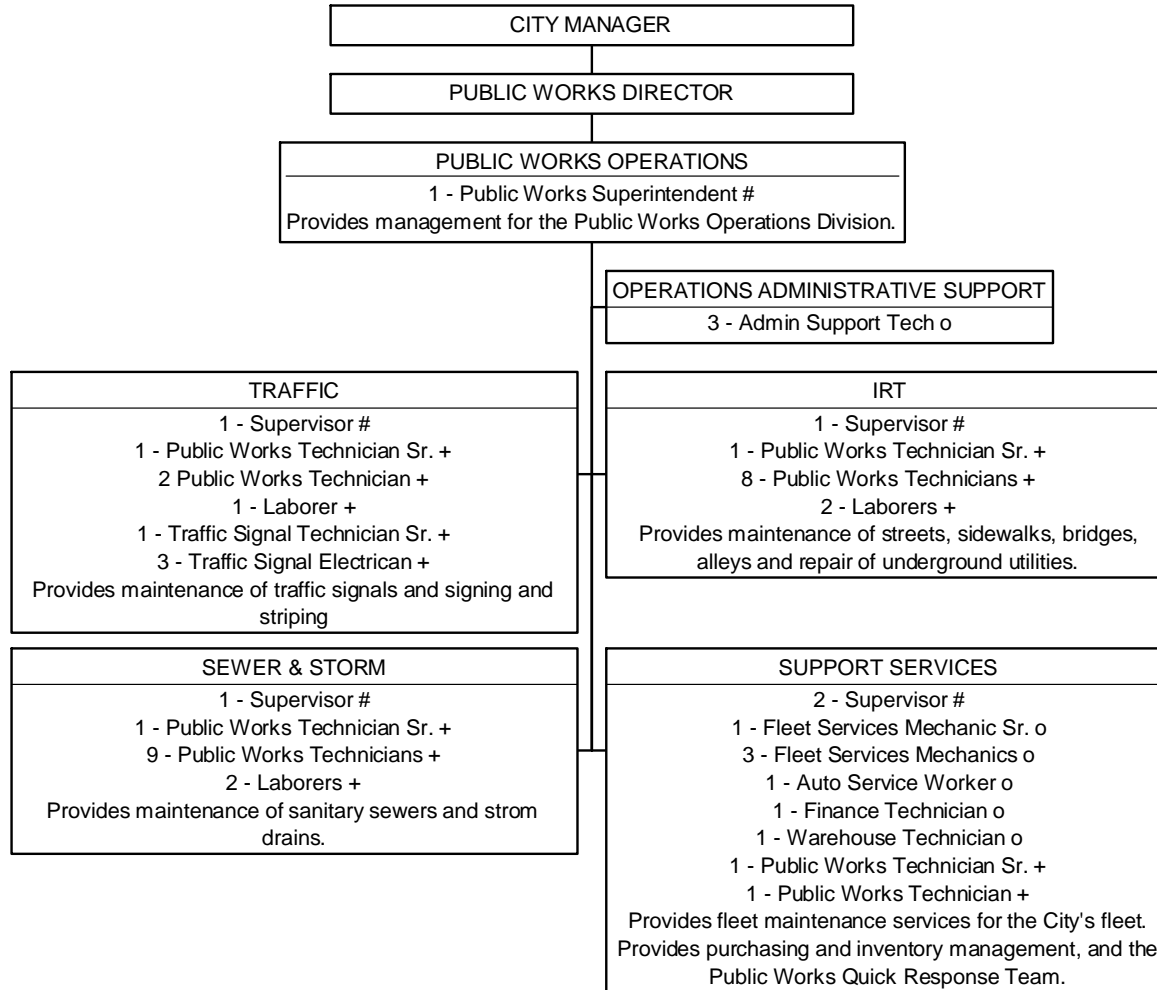
PUBLIC WORKS DEPARTMENT

Engineering and Development



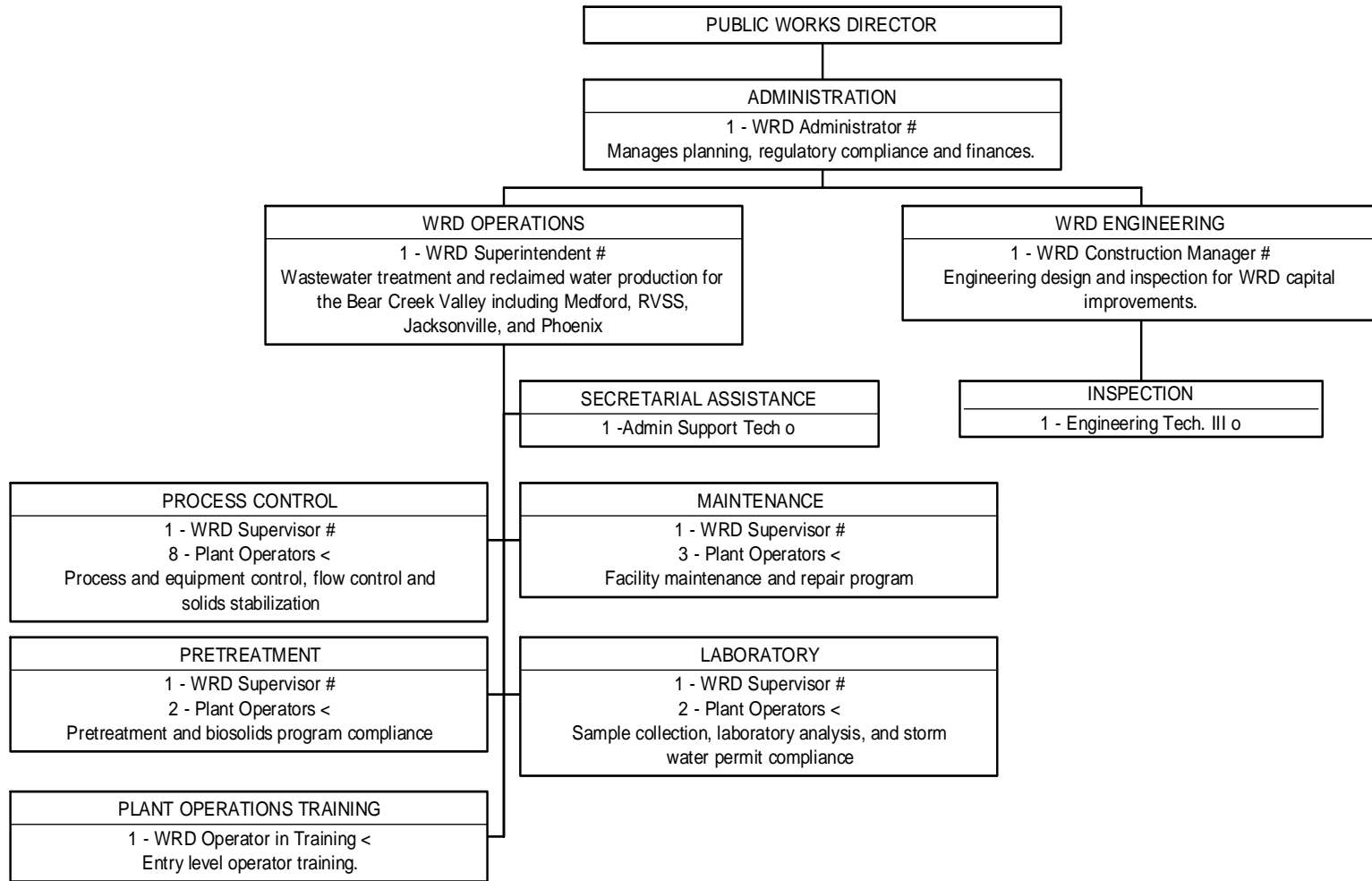
PUBLIC WORKS DEPARTMENT

Operations Division



- # Executive, Supervisory, Confidential/Professional
- o Medford Municipal Employees Association/AFSCME
- + Teamsters - Construction and Maintenance
- o Medford Municipal Mechanics Association

PUBLIC WORKS DEPARTMENT Water Reclamation Division (WRD)



Executive, Supervisory, Confidential/Professional
 < WRD Operators Association
 o Medford Municipal Employees Association

POSITION STAFFING SUMMARY
Listing by Function
Budgeted Fiscal Year

	<u>94-95</u>	<u>95-96</u>	<u>96-97</u>	<u>97-98</u>	<u>98-99</u>	<u>99-00</u>	<u>00-01</u>	<u>01-02</u>	<u>02-03</u>	<u>03-04</u>	<u>04-05</u>	<u>05-06</u>	<u>06-07</u>
City Manager	5.0	5.0	5.0	5.0	5.0	6.0	8.0	9.0	11.0	10.0	10.0	12.0	13.0
Technology Services	5.0	5.0	5.0	5.0	5.0	9.0	11.0	11.0	11.0	11.0	11.0	10.0	12.0
Recorder	1.0	1.0	1.0	1.0	1.0	1.0	2.0	2.0	2.0	2.0	2.0	0	0
Human Resources	3.0	3.0	3.0	3.0	3.0	3.0	3.0	3.0	3.0	3.0	3.0	3.0	3.0
Finance	11.0	10.5	10.5	11.0	11.0	12.0	12.0	12.0	12.0	11.0	11.0	11.0	11.0
Planning	13.0	13.0	14.0	14.0	14.0	14.0	14.0	15.0	16.0	16.0	16.0	18.0	20.0
Building Inspection	12.0	14.0	13.0	13.0	13.0	13.0	14.0	15.0	15.0	15.0	15.0	16.5	17.0
Public Works													
Engineering	21.0	21.0	22.0	22.0	24.0	25.0	27.0	28.0	28.0	29.0	30.0	30.0	33.0
Maintenance	42.0	40.0	42.0	42.0	39.0	40.0	42.0	44.0	46.0	46.0	46.0	43.0	49.0
WRD	21.0	21.0	21.0	21.0	23.0	23.0	24.0	24.0	24.0	24.0	24.0	24.0	25.0
City Attorney	3.0	3.0	3.0	3.0	3.0	3.0	3.0	4.0	4.0	4.0	4.0	4.0	4.0
Municipal Court	6.5	7.0	7.0	7.5	7.0	7.0	8.0	8.0	8.0	8.0	8.0	8.0	8.0
Parking Enforcement	.5	.5	.5	.5	1.3	1.3	--	--	--	--	--	--	--
Police	107.0	117.0	126.0	132.0	136.0	140.0	141.0	142.0	151.0	150.0	150.0	148.0	151.0
Fire	70.0	72.0	72.0	74.0	74.0	75.0	75.0	74.0	74.0	74.0	74.0	74.0	74.0
Parks & Recreation	<u>24.0</u>	<u>25.0</u>	<u>25.0</u>	<u>24.0</u>	<u>26.0</u>	<u>23.0</u>	<u>23.0</u>	<u>24.0</u>	<u>25.0</u>	<u>25.0</u>	<u>25.0</u>	<u>26.0</u>	<u>33.0</u>
TOTAL	345.0	358.0	370.0	378.0	385.3	395.3	407.0	415.0	430.0	428.0	429.0	428.5	449.0