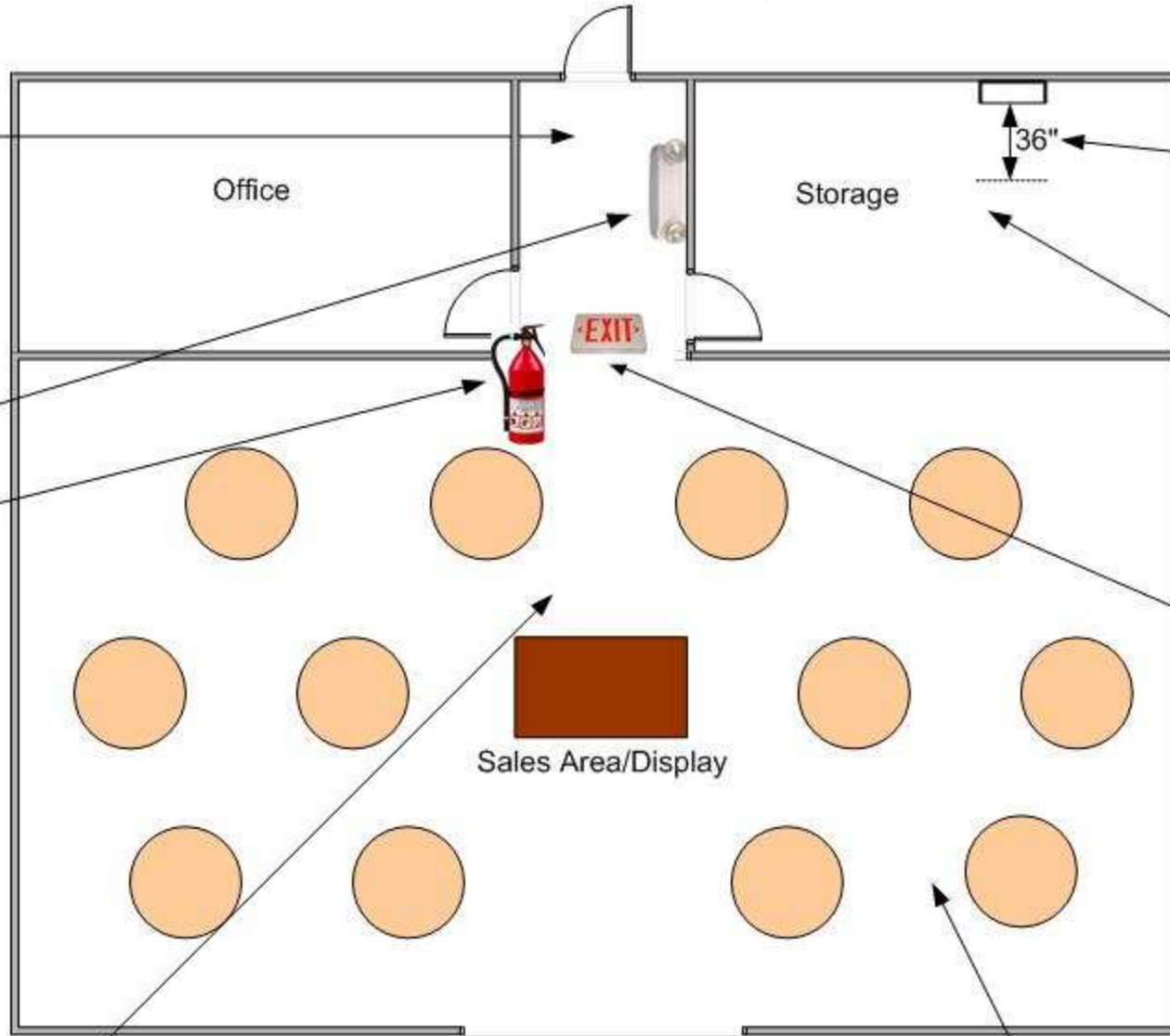




**Exit Passageway/Delivery Corridor**  
(No storage allowed in this area)



**Exit Access:**  
Maintain minimum 36" unobstructed width or the width of the exit door into the passageway, whichever is greater

**Emergency Lighting:**  
For egress illumination  
Test and maintain

**Fire Extinguisher(s):**  
Required to be mounted, readily accessible, in plain view, and serviced annually

**Extension Cords:**  
Not allowed for permanent use-  
Use powerstrip with built-in circuit breaker instead

**Main Access Aisles:**  
Maintain minimum 36" unobstructed width\*

**Indoor Mall Frontage:**  
Minimum 10' aisle between store front and any kiosk, cart, display, etc.

**Fire Sprinkler Obstructions:**  
Hanging banners cannot be placed where they obstruct fire sprinkler spray pattern development or block sight of exit signs

**Electrical Panels:**  
Maintain minimum 36" clear space in front of, no combustible storage on top of or around transformers

**Storage:**  
Maintain orderly with maximum top-of-storage height 18" below sprinkler heads

**Exit Signs:**  
Maintain illuminated with backup power. Must be visible from any direction

**Decorations/ Furnishings:**  
(See back of this brochure)

\* (Min. 44" unobstructed width, 50 or more occupants)

**Not to Scale**

### Exitways:

- Do not block or obstruct
- Do not store combustibles in or near
- Do not lock exit doors-only the main entrance door can be locked-all other exit doors cannot be locked in a way that prevents exiting from the inside



### Emergency lighting:

- Maintain operable (exitways)
- To last minimum 60 minutes under backup battery



### Exit Signs:

- Required at all exits except main entrance
- Must be visible from any direction
- Maintain illuminated or self-luminous
- Must have backup power-test monthly



### Extension Cords:

- Use Power taps with built-in circuit breaker (as shown below) instead of extension cords.
- A power tap must be plugged directly into a wall outlet.



### Portable Fire Extinguishers:

- Must be located in plain view, in an accessible spot, and near room exits that provide an escape route
- Must be serviced yearly with a service tag attached and in proper working condition. Also, they require a 6-year service collar on extinguishers that require a 12-year hydrostatic test.
- Must be mounted, maximum 5' above floor, minimum 4" off ground.
- Signs required above when not readily visible
- Maximum travel distance to get to an extinguisher is 75'

### Fire Sprinklers:

- Don't obstruct fire sprinkler spray pattern with decorations, banners, etc.
- Maintain a minimum 18" clearance below sprinkler head deflector.



### Decorations and Furnishings:

- Shall not obstruct exits, access thereto, egress therefrom, or visibility thereof
- Furnishings or decorations of an explosive or highly flammable character shall not be used



This brochure is being provided as a resource. If you need a copy of the code references cited in this brochure or want more business fire safety information, go to our website located at [www.medfordfirerescue.org](http://www.medfordfirerescue.org) or contact the Medford Fire Department Prevention Bureau.

# Fire Safety Information: Mall Mercantile Occupancies



## Medford Fire Department Fire Marshal's Office

Medford City Hall Annex  
200 S. Ivy Street, Room #257  
Medford, OR 97501  
Ph. (541) 774-2300 Fax (541) 774-2514  
[www.medfordfirerescue.org](http://www.medfordfirerescue.org)