

APPENDIX C: SPORTS FACILITY INVENTORY

Appendix C contains an inventory of existing sports facilities in the Medford Planning Area. Facility categories include:

- Adult baseball fields
- Adult softball fields
- Youth baseball/softball fields
- Soccer fields (youth and adult)
- Football fields
- Gymnasiums (indoor courts)
- Swimming pools



Since many existing facilities have restrictions and limitations that affect scheduling and use, these facilities were counted using the following terms, which were defined in Chapter 3, Section 3.3:

- Total inventory
- Restricted inventory
- Unrestricted inventory

In each table, comments explain the use and scheduling restrictions for each facility (if any).

C.1 ADULT BASEBALL FIELDS

Table C-1 presents the inventory of adult baseball fields in the Medford Planning Area:

Table C-1
Adult Baseball Fields
Medford Planning Area

Number	Location	Comments
1	Hedrick Middle School	School District site
1	McLoughlin Middle School	School District site
1	North Medford High School Park	School District site (not included in lease agreement)
1	Saint Mary's High School	Private school
1	South Medford High School	School District site
1	Harry & David Field	Under construction
6	Total Inventory	
5	Restricted Inventory	
1	Unrestricted Inventory	

C.2 ADULT SOFTBALL FIELDS

Table C-2 presents the inventory of adult softball fields in the Medford Planning Area:



Table C-2
Adult Softball Fields
Medford Planning Area

Number	Location	Comments
1R	Church of God (back lot)	Inadequate size
1R	Delta Waters School Park	Soccer field overlay
0	Hawthorne Park	Abandoned practice field; turf infield
1 UR	Howard School Park	1 is heavily used 2 is not in use
1 UR 1 R	Jackson School Park	Lighted; Jackson Field heavily used. Jackson is limited use due to size
2 UR 1 R	Jefferson School Park	Jefferson 1 and 2 are heavily used; Jefferson 3 currently unused
0	McLoughlin Middle School	School District site
1 UR 1 R	North Medford High School Park	Both Multi- use with soccer; North 1 has drainage problem; North 2 is heavily used
1 UR 1 R	Wilson School Park	Wilson 1 close to street, short right field (women's leagues only); Wilson 2 is heavily used
12	Total Inventory	
6	Restricted Inventory (R)	
6	Unrestricted Inventory (UR)	

C.3 YOUTH BASEBALL/SOFTBALL FIELDS

Table C-3 presents the inventory of youth baseball/softball fields in the Medford Planning Area:



Table C-3
Youth Baseball/Softball Fields
 Medford Planning Area

Number	Location	Comments
6 UR	Bear Creek Park	Averaged to reflect share with softball; 3 t-ball fields in surrounding turf areas
1R	Hoover School Park	Used for practices only; has a parking lot in left field
1R	Kennedy School Park	Grade school field; left field is short
1R	Lone Pine School Park	Inadequate size; running track around it limits play
1R	Oak Grove Elementary School	School District site
1R	Roosevelt School Park	Not in use; grade school field
10 R	National League Fields	Limited to club members, but used for games
1 R	Babe Ruth (replace in 2006)	Temp.
1 R	Jackson Park	Fagone Field
1 R	Jackson School Park	Jackson Field #2
1 R	Jefferson School Park	Field #3
26	Total Inventory	
20	Restricted Inventory (R)	
6	Unrestricted Inventory (UR)	

C.4 SOCCER FIELDS

Table C-4 presents the inventory of soccer fields in the Medford Planning Area:



**Table C-4
Soccer Fields
Medford Planning Area**

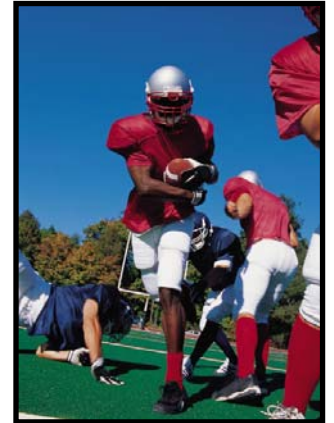
Number	Location	Comments
1R	Bear Creek Little League	Fall practice field
1UR	Delta Waters School Park	Multi-use
3UR 1R	Fichtner-Mainwaring Park	Heavy use for 3 fields; 4th field is rotated in to allow one field to rest. The 4 th field is used for the Rogue Valley Cup.
1UR	Hawthorne Park	Heavy use
1R	Hedrick Middle School	School District site
1UR*	Hoover School Park	Multi-use
1R	Howard School Park	Rough grade (potential Multi-use if baseball field is brought back into use)
2UR 1R	Jefferson School Park	Jefferson 1 and 2 are heavily used; Jefferson 3 is used for tournaments only
1UR	Kennedy School Park	Frequent use
1UR	Lone Pine School Park	Frequent use
1UR*	McLoughlin Middle School	School District site
2UR 3R	North Medford High School Park	# 1 & # 2 limited use; #3 & #4 tournament use only. # 5 is scheduled by the School.
1UR*	Oak Grove Elementary School	School District site
1UR	Orchard Hill School Park	Frequent use
1UR*	Roosevelt School Park	Small field for practices only; overlays softball field
1R	Saint Mary's High School	Private school
2R	South Medford High School Park	School District site
1R	Washington School Park	Practice field; inadequate size for league play
2UR*	Wilson School Park	Multi-use field
30	Total Inventory	
12	Restricted Inventory (R)	
18	Unrestricted Inventory (UR)	

C.5 Football Fields

Table C-5 presents the inventory of football fields in the Medford Planning Area:

**Table C-5
Football Fields
Medford Planning Area**

Number	Location	Comments
1	Hedrick Middle School	School District site
1	McLoughlin Middle School	School District site
2	North Medford High School Park	1 game; 1 practice
1	Saint Mary's High School	Private school
1	South Medford High School Park	School District site
6	Total Inventory	
5	Restricted Inventory	
1	Unrestricted Inventory	





C.6 GYMNASIUMS

Table C-6 presents the inventory of gymnasiums in the Medford Planning Area:

**Table C-6
Gymnasiums
Medford Planning Area**

Number	Location	Comments
1	Abe Lincoln Elementary School	School District site
1	Hedrick Middle School	School District site
1	Hoover Elementary School	School District site
1	Howard Elementary School	School District site
1	Jackson Elementary School	School District site
1	Jefferson Elementary School	School District site
1	Kennedy Elementary School	School District site
1	Lone Pine Elementary School	School District site
1	McLoughlin Middle School	School District site
2	North Medford High School	School District site
1	Oak Grove Elementary School	School District site
1	Orchard Hill Elementary School	School District site
1	Roosevelt Elementary School	School District site
1	Saint Mary's High School	Private school
3	South Medford High School	School District site
1	Washington Elementary School	School District site
1	Wilson Elementary School	School District site
2	Santo Center (Budgeted)	City of Medford
22	Total Inventory	
20	Restricted Inventory	
2	Unrestricted Inventory	

¹ AAU and YMCA seem to have priority in scheduling at School District facilities.

C.7 INDOOR SWIMMING POOLS

Table C-7 presents the inventory of indoor swimming pools in the Medford Planning Area:



Table C-7
Swimming Pools
Medford Planning Area

Square Feet	Location	Comments
	America’s Best Kids Sports Center	Under construction
	Hawthorne Park (6,000 SF)	Outdoor; 40 yards, 6 lanes
	Jackson Park (4,350 SF)	Outdoor; 25 yards, 6 lanes
4,200	YMCA	Indoor; 25 yards, 8 lanes
4,200	Total Inventory¹	
4,200	Restricted Inventory²	
0	Unrestricted Inventory³	

¹ The total inventory includes only indoor pools that are open to the public.

² The restricted inventory for pools includes all pools suitable for programming, classes, and perhaps competitive swimming.

³ The unrestricted inventory excludes pools not under City ownership/control for scheduling.

⁴ Note: Additional private swimming pools in the Medford Planning Area include the Rogue Valley County Club, the Rogue Valley Swim & Tennis Club, the Superior Athletic Club, 24-hour Fitness, and the Waterford Health and Fitness Club (at the Waterford Retirement Community).